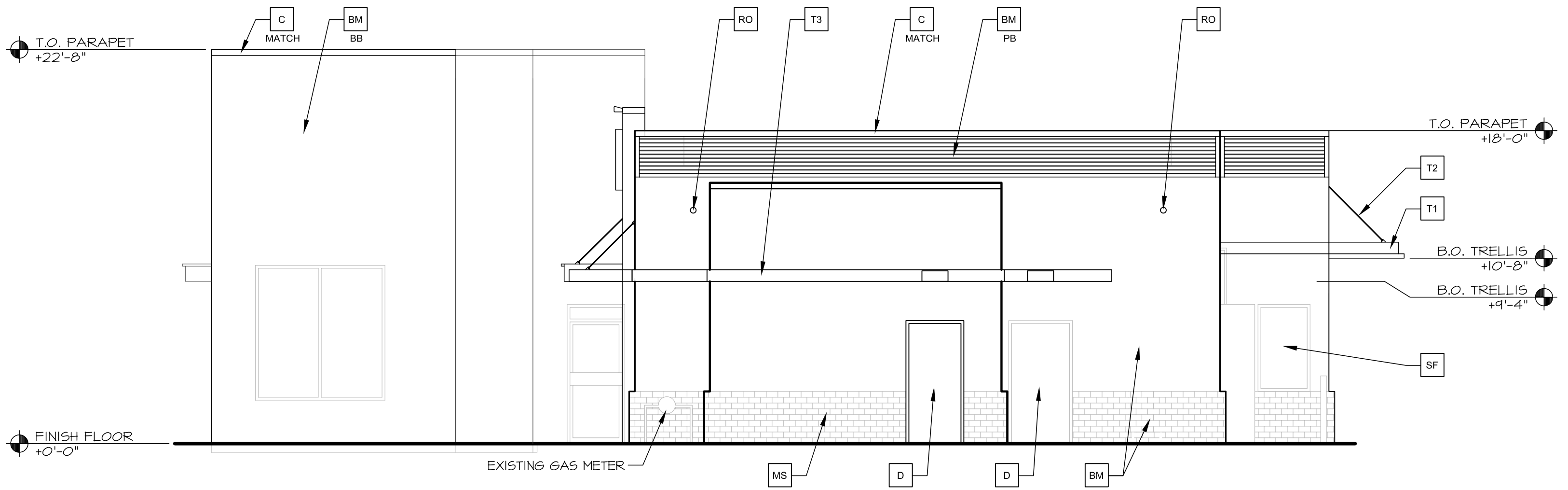
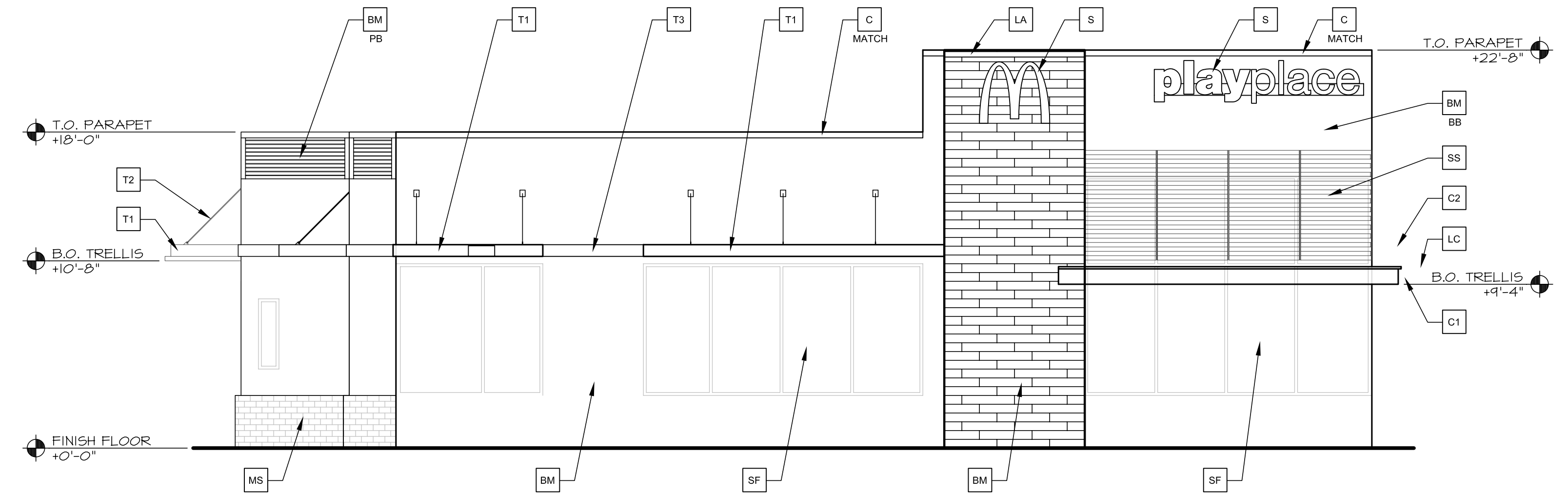


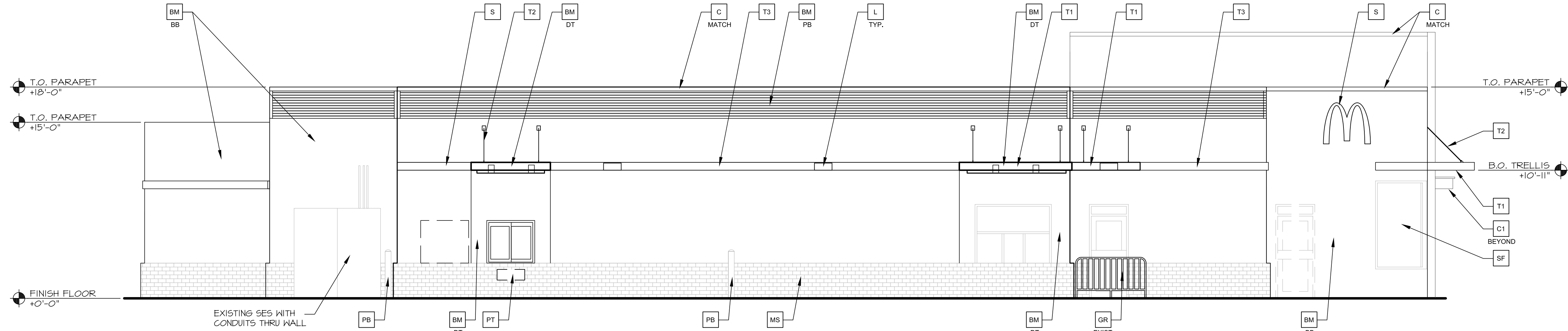
NON DRIVE THRU ELEVATION - SOUTH



REAR ELEVATION - EAST



FRONT ELEVATION - WEST



DRIVE THRU ELEVATION - NORTH

KEY NOTES:			NOTE:	COLOR LEGEND (ALL COLORS ARE PER BENJAMIN MOORE PAINTS, U.N.O.)	
BM BUILDING MATERIAL BB COLOR: AR = ARCADE AG = ACCENT BB = BASE BUILDING DT = DRIVE THRU BANDING PB = PARAPET BAND C1 ALUMINUM CANOPY (COLOR: WHITE) C2 ALUMINUM CANOPY TIE-BACK C METAL COPING - COLOR TO MATCH SURROUNDING MATERIAL MATCH CJ CONTROL JOINT	D HOLLOW METAL DOOR - PAINT TO MATCH COLOR OF SURROUNDING MATERIAL GR GUARDRAIL L LIGHT FIXTURE (WALL SCONCE - DOWN ONLY) - SEE ELECTRICAL LA LIGHT FIXTURE (ARCADE LIGHT - DOWN ONLY) - SEE ELECTRICAL (LINEAR FIXTURE COVER TO COVER FULL BRAND/ARCADE WALL) LC LIGHT FIXTURE (CANOPY LIGHT - DOWN ONLY) - SEE ELECTRICAL ML METAL LETTERING - BY OTHERS MS EXISTING BRICK WAINSCOT TO REMAIN	PB PIPE BOLLARD - PAINTED YELLOW PT PASS-THRU COIN COLLECTOR - OPTIONAL (RMHC) RO ROOF DRAIN OVERFLOW PIPE PAINT TO MATCH SURROUNDING MATERIAL S McDONALD'S SIGNAGE BY OTHERS - UNDER SEPARATE PERMIT, SEE SIGNAGE SUPPORT NOTE ON THIS SHEET. SF NEW STOREFRONT AND GLAZING SS METAL LOUVER SUNSCREEN PANEL	T1 ALUMINUM TRELLIS T2 ALUMINUM TRELLIS TIE-BACK T3 ALUMINUM TRELLIS 2x8 WALL FASCIA TL TILE FINISH	NOTE: - EIFS CONTROL JOINTS INSTALLED PER MANUFACTURER'S RECOMMENDATIONS. LOCATIONS TO BE COORDINATED BY ARCHITECT OF RECORD. - BOTTOM DT COLOR BAND SHOULD BE DARKER COLOR OF ANY EXTERIOR TWO-COLOR SCHEME. - TOP DT BAND HEIGHT WILL VARY ACCORDING TO BOTTOM OF TRELLIS LOCATION. - HIGHLY RECOMMEND BRAND DT HEARTH ELEMENT TO BE INSTALLED BASED ON SITE VISIBILITY. - HIGHLY RECOMMEND REAR BRAND WALL ELEMENT TO BE INSTALLED BASED ON SITE VISIBILITY. - CORRUGATED METAL: RECOMMEND ALUMINUM FOR PROJECTS WITH IN 2,000FT FROM SALTWATER ENVIRONMENTS.	NOTE: AR ARCADES & HEARTH - TILE (PREFERRED) EUROWEST, E-WOOD COLLECTION COLOR: BR BLACK, SIZE: 6"X36" WATERPROOFING SETTING MATERIAL AND GROUT: BY MAPEI GROUT COLOR: ULTRA COLOR PLUS - 41 CHARCOAL CORNER TRIM: SCHLUTER, RONNEG ROIDOTSDA Dark Anthracite; MATERIAL: ALUM. HEIGHT:10MM BB BASE BUILDING -STUCCO FAIRVIEN TAUPE BM HC-05 DT DRIVE THRU SURROUND - IRON MOUNTAIN BM 2134-30 AC ACCENT - WAYNESBORO TAUPE BM 1544 PB PARAPET BAND - CORRUGATED METAL - 3/8" 5" PANEL 24 GAUGE, COLOR: CITY SCAPE

MCDONALD'S - PROPOSED ELEVATIONS

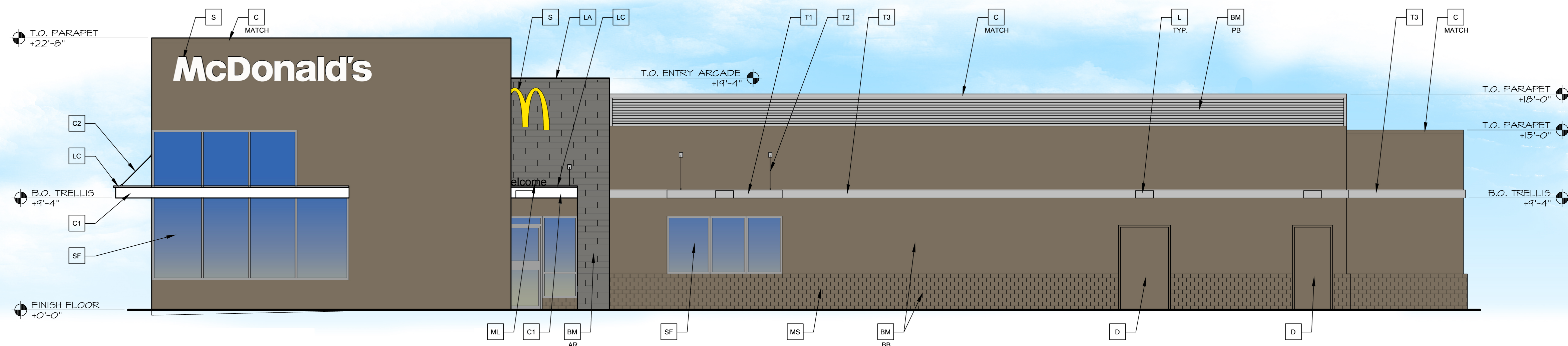
2665 S Alma School Rd, Mesa, AZ 85210



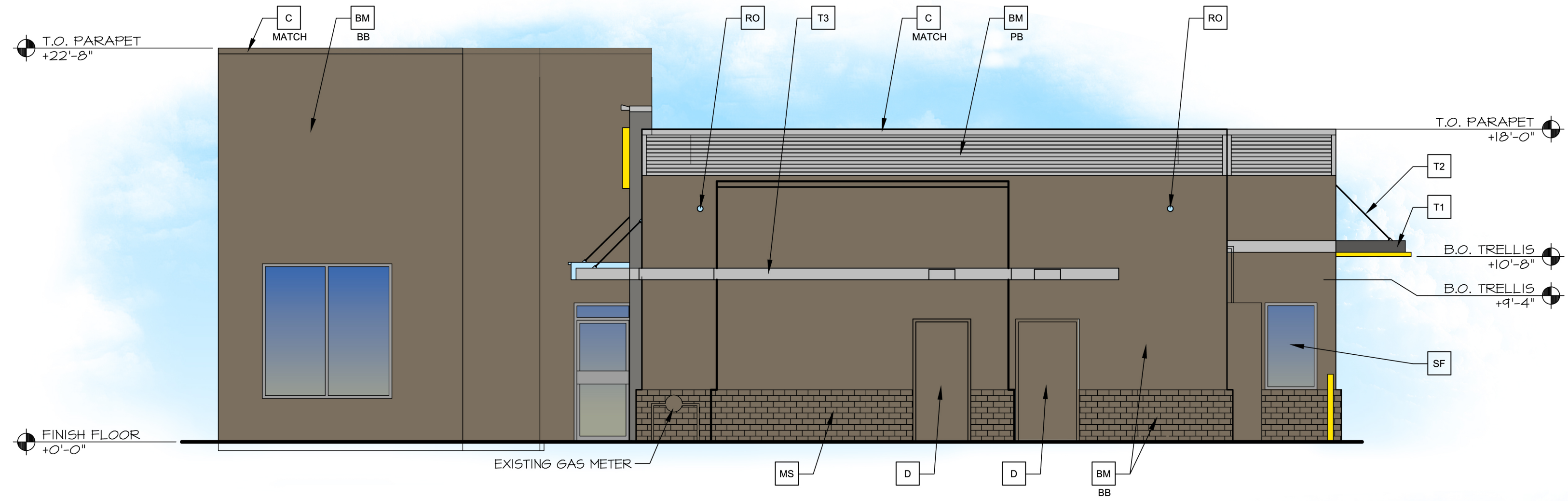
300 W. Clarendon Avenue
Suite 320
Phoenix, AZ 85013
O: 602.234.1868
F: 602.234.1413

PREPARED FOR: McDonald's USA, LLC
 These drawings are the confidential and proprietary property of McDonald's USA, LLC and shall not be copied or reproduced without written authorization. Use of these drawings for reference or example on another project requires the services of properly licensed architects and engineers. Reproduction of these documents for reuse on another project is not authorized.

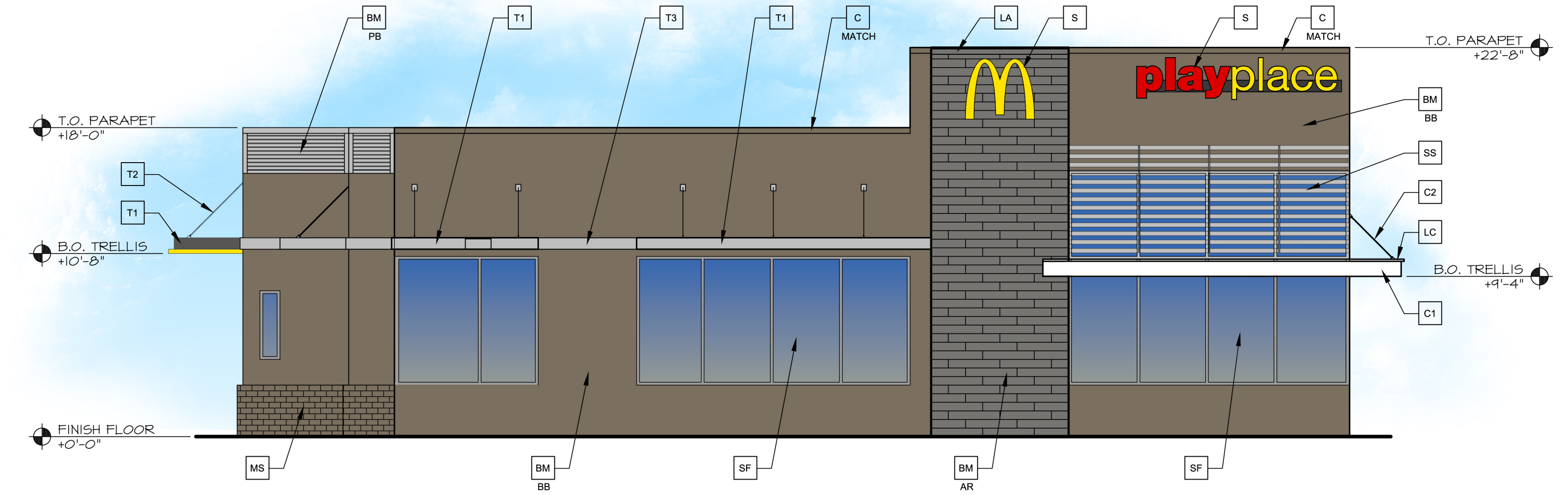
16094 - 02/15/2017



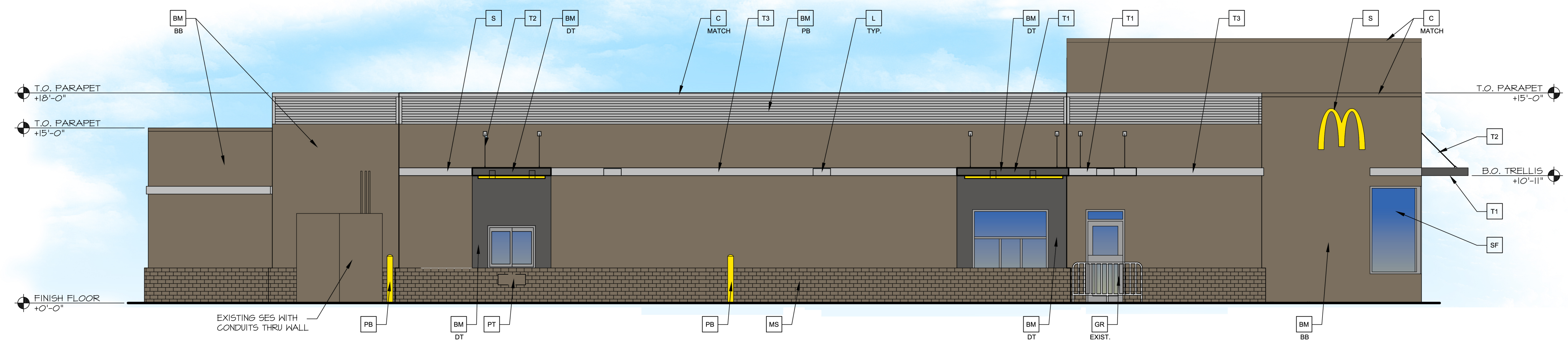
NON DRIVE THRU ELEVATION - SOUTH



REAR ELEVATION - EAST



FRONT ELEVATION - WEST



DRIVE THRU ELEVATION - NORTH

KEY NOTES:				NOTE:	COLOR LEGEND (ALL COLORS ARE PER BENJAMIN MOORE PAINTS, U.N.O.)												
BM BUILDING MATERIAL	D HOLLOW METAL DOOR - PAINT TO MATCH COLOR OF SURROUNDING MATERIAL	PB PIPE BOLLARD - PAINTED YELLOW	T1 ALUMINUM TRELLIS	- EIFS CONTROL JOINTS INSTALLED PER MANUFACTURER'S RECOMMENDATIONS. LOCATIONS TO BE COORDINATED BY ARCHITECT OF RECORD. - BOTTOM DT COLOR BAND SHOULD BE DARKER COLOR OF ANY EXTERIOR TWO-COLOR SCHEME. - TOP DT BAND HEIGHT WILL VARY ACCORDING TO BOTTOM OF TRELLIS LOCATION. - HIGHLY RECOMMEND REAR BRAND DT HEARTH ELEMENT TO BE INSTALLED BASED ON SITE VISIBILITY. - HIGHLY RECOMMEND REAR BRAND WALL ELEMENT TO BE INSTALLED BASED ON SITE VISIBILITY. - CORRUGATED METAL: RECOMMEND ALUMINUM FOR PROJECTS WITH IN 2000FT FROM SALTWATER ENVIRONMENTS.	<table border="1"> <thead> <tr> <th colspan="2">NOTE:</th> </tr> </thead> <tbody> <tr> <td>AR</td> <td>ARCADES & HEARTH - TILE (PREFERRED) EUROVEST - E-WOOD COLLECTION COLOR: R4 BLACK SIZE: 6"x36" WATERPROOFING SETTING MATERIAL AND GROUT: BY MAPEI GROUT COLOR: ULTRA COLOR PLUS - 41 CHARCOAL GROUT WIDTH: 1/8" TO 3/16" CORNER TRIM: SCHLITZER, RONDEG ROLOOTSDA Dark Anthracite; MATERIAL: ALUM. HEIGHT: 10MM</td> </tr> <tr> <td>BB</td> <td>BASE BUILDING - STUCCO FAIRVIEW TAUPE BM HC-85</td> </tr> <tr> <td>DT</td> <td>DRIVE THRU SURROUND - IRON MOUNTAIN BM 2134-30</td> </tr> <tr> <td>AC</td> <td>ACCENT - WAYNESBORO TAUPE BM 1544</td> </tr> <tr> <td>PB</td> <td>PARAPET BAND - CORRUGATED METAL - 36" x 51" PANEL 24 GAUGE, COLOR: CITY SCAPE</td> </tr> </tbody> </table>	NOTE:		AR	ARCADES & HEARTH - TILE (PREFERRED) EUROVEST - E-WOOD COLLECTION COLOR: R4 BLACK SIZE: 6"x36" WATERPROOFING SETTING MATERIAL AND GROUT: BY MAPEI GROUT COLOR: ULTRA COLOR PLUS - 41 CHARCOAL GROUT WIDTH: 1/8" TO 3/16" CORNER TRIM: SCHLITZER, RONDEG ROLOOTSDA Dark Anthracite; MATERIAL: ALUM. HEIGHT: 10MM	BB	BASE BUILDING - STUCCO FAIRVIEW TAUPE BM HC-85	DT	DRIVE THRU SURROUND - IRON MOUNTAIN BM 2134-30	AC	ACCENT - WAYNESBORO TAUPE BM 1544	PB	PARAPET BAND - CORRUGATED METAL - 36" x 51" PANEL 24 GAUGE, COLOR: CITY SCAPE
NOTE:																	
AR	ARCADES & HEARTH - TILE (PREFERRED) EUROVEST - E-WOOD COLLECTION COLOR: R4 BLACK SIZE: 6"x36" WATERPROOFING SETTING MATERIAL AND GROUT: BY MAPEI GROUT COLOR: ULTRA COLOR PLUS - 41 CHARCOAL GROUT WIDTH: 1/8" TO 3/16" CORNER TRIM: SCHLITZER, RONDEG ROLOOTSDA Dark Anthracite; MATERIAL: ALUM. HEIGHT: 10MM																
BB	BASE BUILDING - STUCCO FAIRVIEW TAUPE BM HC-85																
DT	DRIVE THRU SURROUND - IRON MOUNTAIN BM 2134-30																
AC	ACCENT - WAYNESBORO TAUPE BM 1544																
PB	PARAPET BAND - CORRUGATED METAL - 36" x 51" PANEL 24 GAUGE, COLOR: CITY SCAPE																
BB COLOR	GR GUARDRAIL	PT PASS-THRU COIN COLLECTOR - OPTIONAL (RMHC)	T2 ALUMINUM TRELLIS TIE-BACK														
AR = ARCADE	L LIGHT FIXTURE (WALL SCONCE - DOWN ONLY) - SEE ELECTRICAL	RO ROOF DRAIN OVERFLOW PIPE PAINT TO MATCH SURROUNDING MATERIAL	T3 ALUMINUM TRELLIS 2x8 WALL FASCIA														
AC = ACCENT	LA LIGHT FIXTURE (ARCADE LIGHT - DOWN ONLY) - SEE ELECTRICAL (LINEAR FIXTURE COVER TO COVER FULL BRAND/ARCADE WALL)	S MCDONALD'S SIGNAGE BY OTHERS - UNDER SEPARATE PERMIT. SEE SIGNAGE SUPPORT NOTE ON THIS SHEET.	TL TILE FINISH														
BB = BASE BUILDING	LC LIGHT FIXTURE (CANOPY LIGHT - DOWN ONLY) - SEE ELECTRICAL	SF NEW STOREFRONT AND GLAZING															
DT = DRIVE THRU BANDING	ML METAL LETTERING - BY OTHERS	SS METAL LOUVER SUNSCREEN PANEL															
PB = PARAPET BAND	MS EXISTING BRICK WAINGCOT TO REMAIN																
C1 ALUMINUM CANOPY (COLOR: WHITE)																	
C2 ALUMINUM CANOPY TIE-BACK																	
C METAL COPING - COLOR TO MATCH SURROUNDING MATERIAL																	
MATCH																	
CJ CONTROL JOINT																	

MCDONALD'S - PROPOSED ELEVATIONS

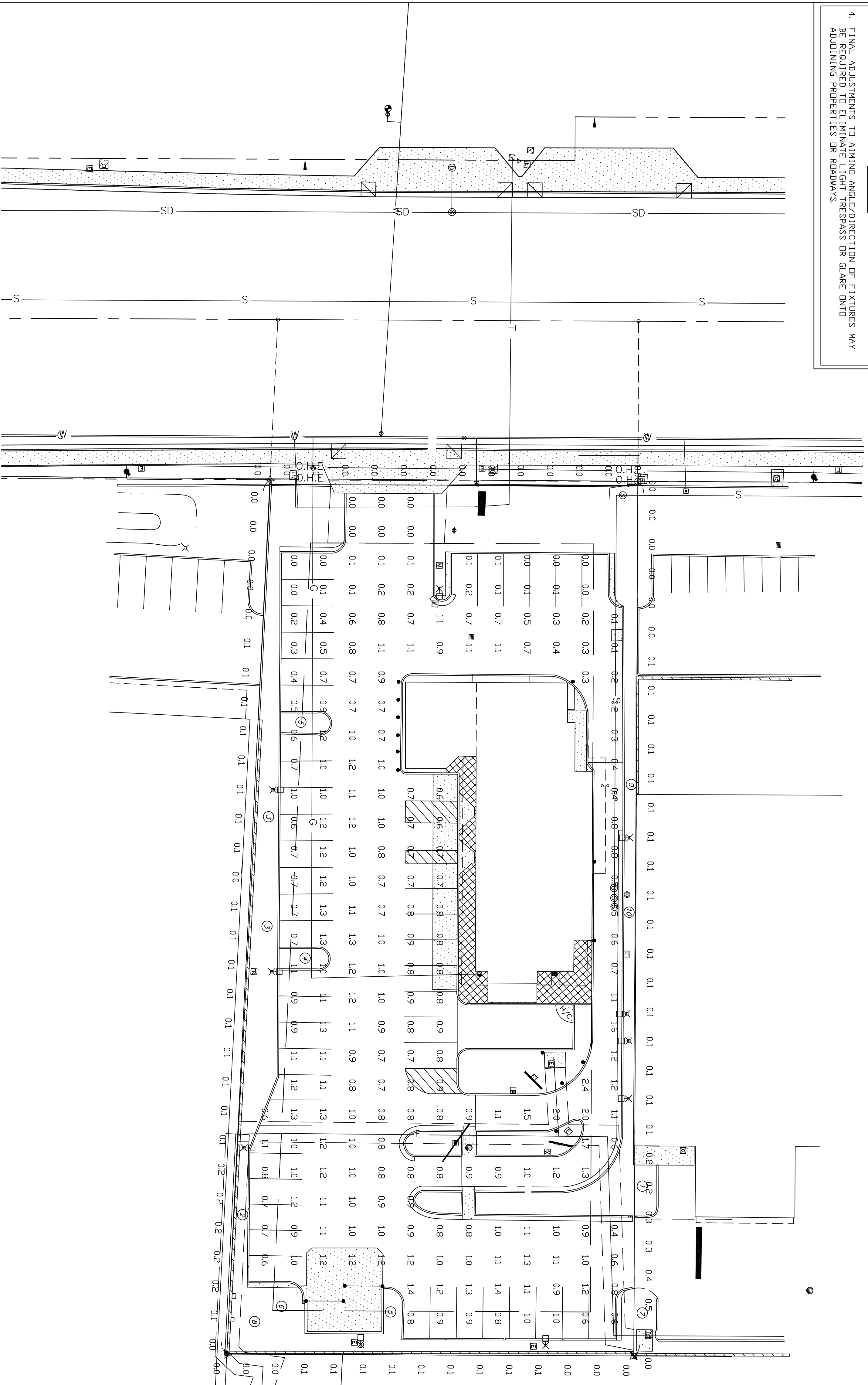
2665 S Alma School Rd, Mesa, AZ 85210



300 W. Clarendon Avenue
Suite 320
Phoenix, AZ 85013
O: 602.234.1868
F: 602.234.1413

16094
02/15/2011

- NOTES:
1. THE FOOTCANDLE LEVELS AS SHOWN ARE BASED ON THE FOLLOWING CRITERIA. ANY SUBSTITUTIONS IN SPECIFIED FIXTURES OR CHANGES TO LAYOUT WILL AFFECT LIGHTING LEVELS. SHOWN AND WILL NOT BE THE RESPONSIBILITY OF SECURITY LIGHTING.
 2. THE CONTRIBUTION OF THE SOFFIT / BUILDING LIGHTING IS NOT REFLECTED ON THE DRAWING UNLESS SOFFIT / BUILDING LIGHTING IS SPECIFIED IN THE FIXTURE SCHEDULE BELOW.
 3. DISTANCE BETWEEN READINGS 10'
 4. FINAL ADJUSTMENTS TO AIMING ANGLE/DIRECTION OF FIXTURES MAY BE REQUIRED TO ELIMINATE LIGHT TRESPASS OR GLARE ONTO ADJOINING PROPERTIES OR ROADWAYS.



PAVED SURFACE READINGS

Average 0.8
 Maximum 2.4
 Minimum 0.0
 N/A
 Maximum N/A

PROPERTY LINE READINGS

Average 0.1
 Maximum 0.0
 Minimum 0.0
 N/A
 Maximum N/A

** - SPECIFY COLOR

FIXTURE TYPE	SYMBOL	FIXTURE QUANTITY	CONFIG	QUANTITY	EPA	HOURLING HEIGHT	LLF	POLE TYPE	EXISTING	QUANTITY	WIND LOAD	ALLOWED EPA
VP-S-24NB-95-SK-T4-UNV-PK2-**	□	10	SGL	10	0.67	24'	0.87	EXISTING		10		

THIS DRAWING MEETS OR EXCEEDS MINIMUM BEAM SPREAD SPECIFICATIONS OF A 3-4 FOOTCANDLE AVERAGE, UNLESS SPECIFIED BY OTHER REQUIREMENTS.

THIS LAYOUT MAY NOT MEET TITLE 24 OR LOCAL ENERGY REQUIREMENTS. IF THIS LAYOUT MEETS WITH TITLE 24 ENERGY REQUIREMENTS, THE ENERGY REQUIREMENTS WILL BE MET BY THE LIGHTING LAYOUT. THE ENERGY REQUIREMENTS WILL BE MET BY THE LIGHTING LAYOUT. THE ENERGY REQUIREMENTS WILL BE MET BY THE LIGHTING LAYOUT.

NOTES

UNLESS OTHERWISE SPECIFIED, ALL DIMENSIONS ARE IN INCHES

SCALE 1/4" = 8'-0" DATE NEXT ASSEMBLY REF. SHEETS

DRAWN BY MW 2/28/17

CHECKED BY

APPROVED BY

APPROVED BY

DATE ORDER

PROJECT NO.

POINT-BY-POINT FOOTCANDLE PLOT FOR

2665 S ALMA SCHOOL RD

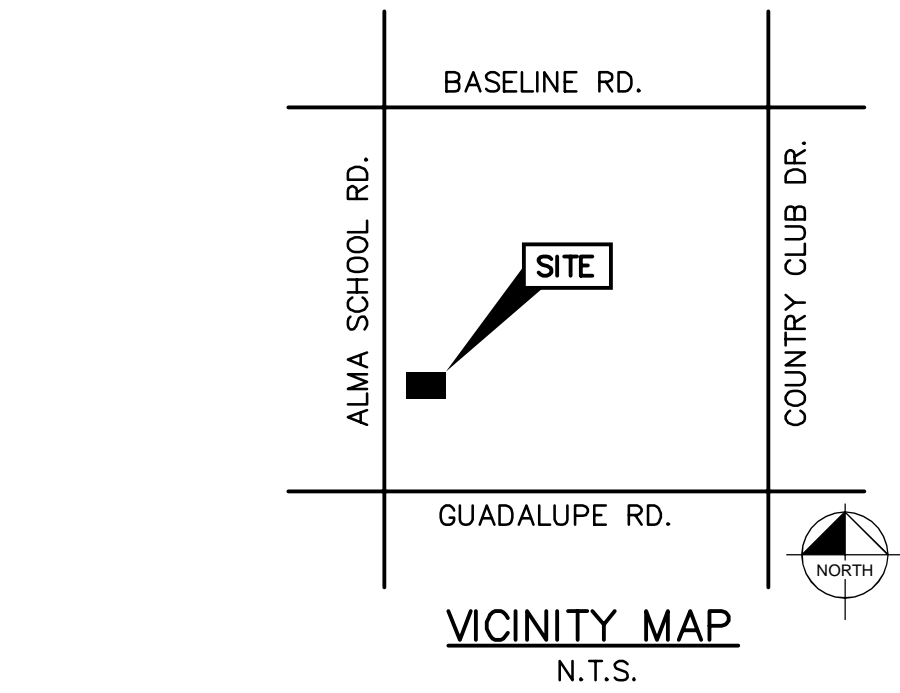
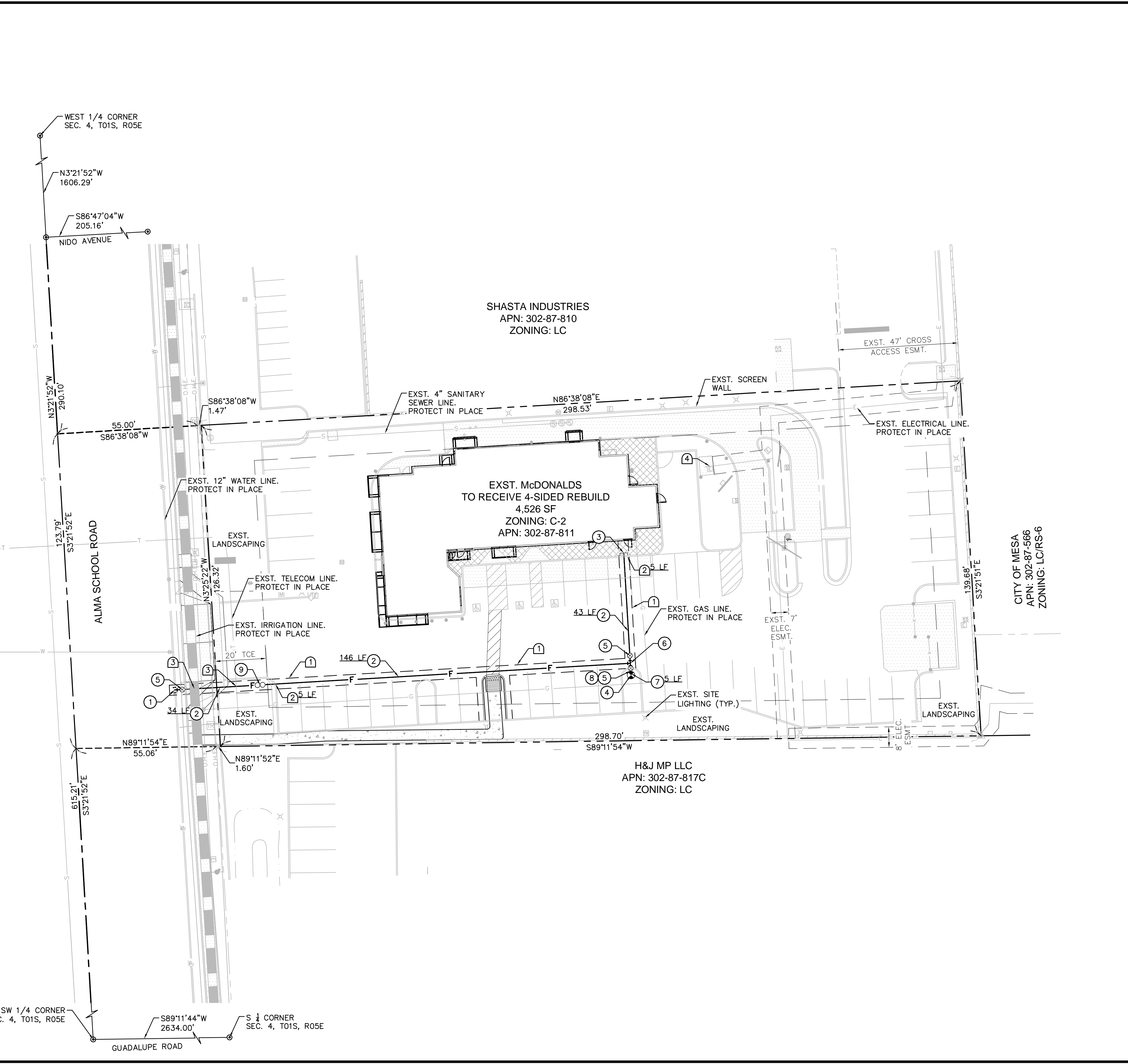
MESA, AZ

DRAWING NUMBER

1PCP35002

REV	DESCRIPTION	BY	DATE	APPR

K:\EAV_Civil\McD- Alma School and Guadalupe\CARD\UT.dwg, Layout1, Layout1, Feb 15, 2017 - 11:48am ondy-vehler
 XREFS: V:\x1b\2016-09-23 EMG(281111)\Front-Sheets\ with footprint xBM (UJI) with footprint xBM (UJI) with footprint xBM (UJI) with footprint xBM (UJI)
 UP AND W/PERMITS. THIS DOCUMENT IS THE PROPERTY OF KIMLEY-HORN AND ASSOCIATES, INC. IT SHALL BE WITHOUT LIABILITY TO KIMLEY-HORN AND ASSOCIATES, INC.



CIVIL ENGINEER
 KIMLEY-HORN AND ASSOCIATES, INC.
 1855 W. BASELINE ROAD, SUITE 200
 MESA, ARIZONA 85202
 TEL: (480) 207-2666
 FAX: (602) 944-7423
 CONTACT: STERLING MARGETTS, PE

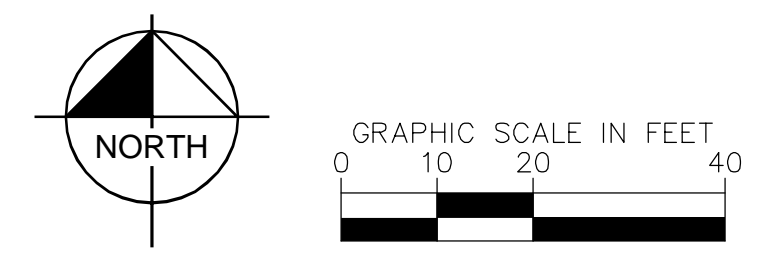
DEVELOPER
 McDONALD'S USA, LLC
 4643 SOUTH ULSSTER ST., SUITE 1300
 DENVER, CO 80237
 TEL: (480) 341-5344
 FAX: (602) 293-5301
 CONTACT: SCOTT AUDSLEY

- GENERAL NOTES**
- SAWCUT, REMOVE, AND REPLACE EXISTING ASPHALT (SY) PER COM STD DET M-19.04.01. 2' WIDTH MINIMUM.
 - SAWCUT, REMOVE, AND REPLACE EXISTING CURB (LF) PER MAG STD DET 222. 5' WIDTH MINIMUM.
 - UTILITY CROSSING. MAINTAIN MINIMUM 2' VERTICAL CLEARANCE.
 - TRANSFORMER UPGRADE TO ACCOMMODATE NEW SES.

- WATER NOTES**
- CUT AND INSTALL 12"x8" DIP TEE PER COM STD DET M-52 WITH THRUST BLOCKS PER MAG STD DET 380 FOR FIRE LINE PER COM STD DET 31.07.
 - INSTALL 8" DIP PRESSURE CLASS 350 MORTAR-LINED WATER LINE WITH POLY WRAP, 3' MIN. COVER. LENGTH PER PLAN. BEDDING AND BACKFILL PER COM STD DET M-19.04.1.
 - CONNECT TO BUILDING FIRE SYSTEM, REF PLUMBING PLANS FOR CONTINUATION.
 - INSTALL PRIVATE FIRE HYDRANT ASSEMBLY AND VALVE COMPLETE PER MAG STD DET 360-1. PROVIDE MIN. CLEARANCE PER MAG STD DET 362. INSTALL 8"x6" REDUCER AFTER VALVE. INSTALL 6" D.I. FIRE LINE, MORTAR LINED PER MAG SPEC 750 WITH POLYWRAP CORROSION PROTECTION PER MAG SPEC 610.5, BEDDING AND BACKFILL PER COM STD DET M-19.04. 4' MINIMUM COVER REQUIRED. LENGTH PER PLAN.
 - INSTALL 8" GATE VALVE PER MAG STD DET 301 AND 391-1, TYPE 'C'.
 - INSTALL 8"x8" TEE WITH THRUST BLOCKS PER MAG STD DET 380.
 - INSTALL 6" DIP PRESSURE CLASS 350 MORTAR LINED WATER LINE WITH POLY WRAP, 3' MIN. COVER. LENGTH PER PLAN. BEDDING AND BACKFILL PER COM STD DET M-19.04.
 - INSTALL 8"x6" REDUCER AFTER VALVE.
 - INSTALL 8" AMES C200 DOUBLE CHECK VALVE ASSEMBLY (OR APPROVED EQUAL) PER COM STD DET M-31.02. CONTRACTOR SHALL MAINTAIN AN UNOBSTRUCTED RADIUS OF NO LESS THAN THREE FEET FROM THE OUTER PERIMETER OF THE BACKFLOW PREVENTOR.

LEGEND

	CONCRETE HARDSCAPE
	MCDONALD'S PROPERTY LINE
	BUILDING SETBACK LINE
	EXISTING SANITARY SEWER
	EXISTING WATER LINE
	PROPOSED FIRE LINE
	PROPOSED ELECTRICAL LINE
	EXISTING ELECTRICAL LINE
	PROPOSED TELEPHONE LINE
	EXISTING TELEPHONE LINE
	EXISTING COMMUNICATIONS LINE
	EXISTING GAS LINE



CALL THE NUMBER FIRST
 BEFORE YOU DIG
602-263-1100
1-800-STAKE-IT
 (OUTSIDE MARICOPA COUNTY)

Kimley-Horn
 © 2017 KIMLEY-HORN AND ASSOCIATES, INC.
 1855 WEST BASELINE ROAD, SUITE 200
 MESA, ARIZONA 85202 (480) 207-2666

ALMA SCHOOL RD.
 AND
 GUADALUPE RD.

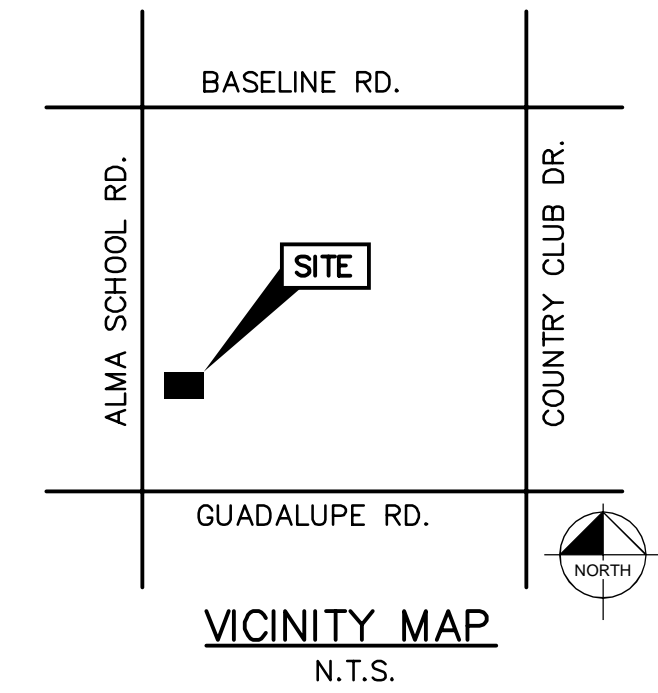
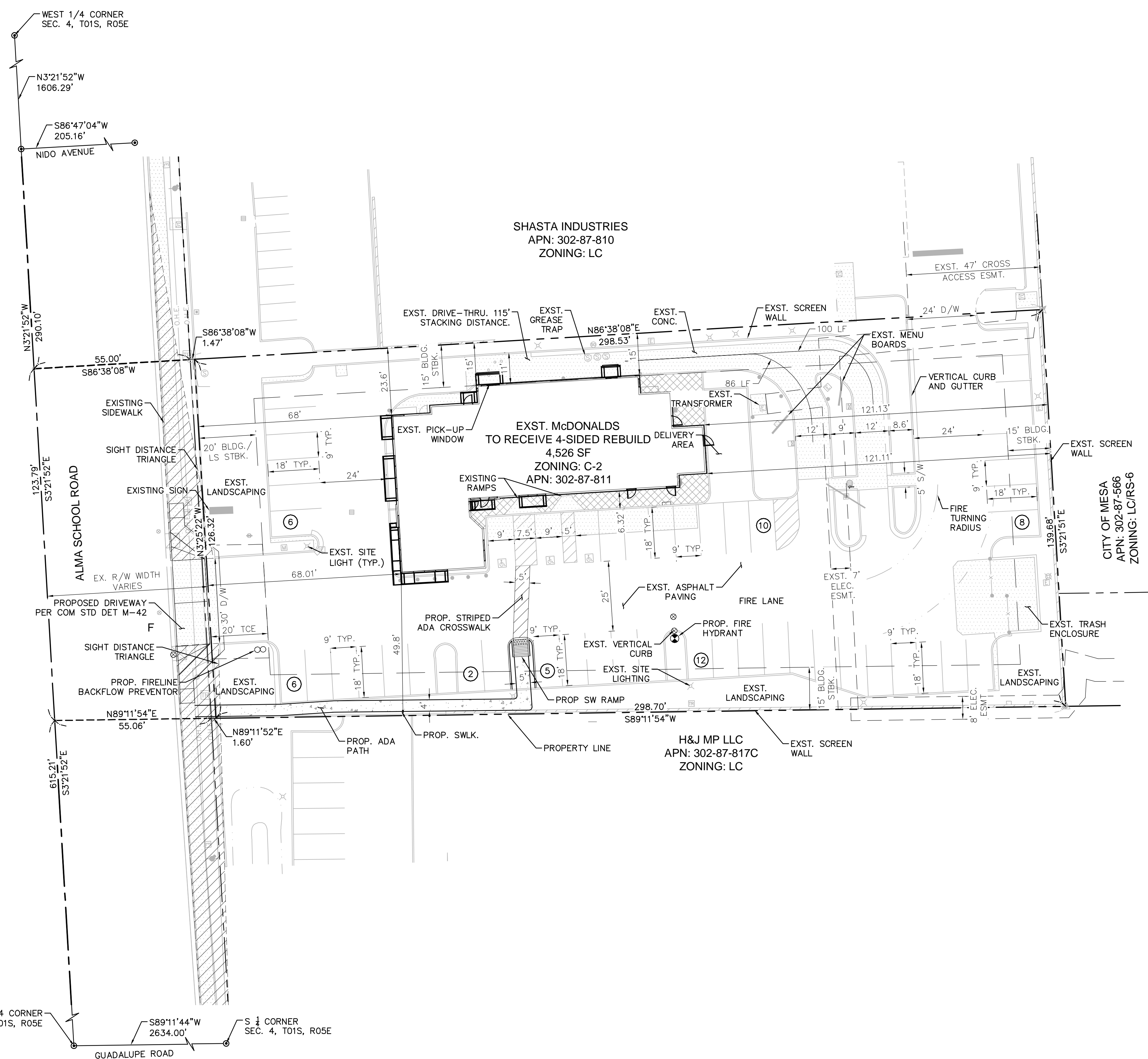
PRELIMINARY UTILITY PLAN

PROJECT No.
SCALE (H): 1"=20'
SCALE (V): NONE
DRAWN BY: ADW
DESIGN BY: STM
CHECK BY: STM
DATE: 02/15/2016



REV	DESCRIPTION	BY	DATE	APPR

K:\EAV_Civil\McD- Alma School and Guadalupe\CADD\SP.dwg, Layout: Layout1, Feb 27, 2017 - 11:45am bryon.wright
 XREFS: V:\1B 2016-09-23 EM6(289111)\PREF\1-Sheets\1 Footprint\XBM\AJI.dwg
 THIS DOCUMENT IS THE PROPERTY OF KIMLEY-HORN AND ASSOCIATES, INC. IT SHALL BE WITHOUT LIABILITY TO KIMLEY-HORN AND ASSOCIATES, INC.



CIVIL ENGINEER
 KIMLEY-HORN AND ASSOCIATES, INC.
 1855 W. BASELINE ROAD, SUITE 200
 MESA, ARIZONA 85202
 TEL: (480) 207-2666
 FAX: (602) 944-7423
 CONTACT: STERLING MARGETTS, PE

DEVELOPER
 McDONALD'S USA, LLC
 4643 SOUTH ULSTER ST., SUITE 1300
 DENVER, CO 80237
 TEL: (480) 341-5344
 FAX: (602) 293-5301
 CONTACT: SCOTT AUDSLEY

SITE INFORMATION
 ADDRESS: 2665 S ALMA SCHOOL RD, MESA
 302-87-811
 ZONING: LC(C-2)
 SITE SF: 39,696 SF
 BUILDING AREA: 4,526 SF
 LOT COVERAGE: 11.4%

PARKING SUMMARY
 McDonalds:
 REQUIRED PARKING RATIO: 1 SPACE PER 100 SF GFA (4,526 SF)

INDIVIDUAL PARKING:	REQUIRED	PROVIDED
STANDARD	44	46
ACCESSIBLE PER ADA	2	3
TOTAL PARKING	46	49

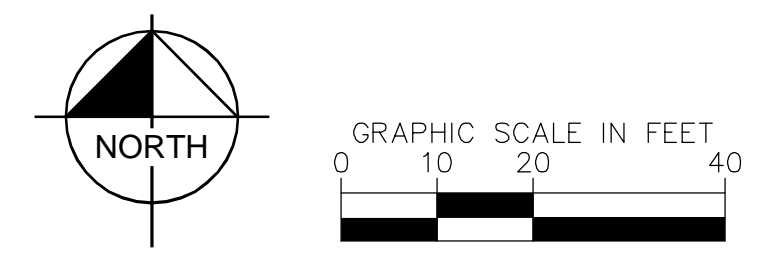
BUILDING CONSTRUCTION TYPE: VB
 OCCUPANCY CLASSIFICATION: A2
 OCCUPANT LOAD: 125

FOUNDATION BASE
 EXISTING FOUNDATION BASE PLANTER TO REMAIN AS APPROVED IN PREVIOUS APPROVED SITE PLAN SINCE BUILDING IS NOT BEING EXPANDED.

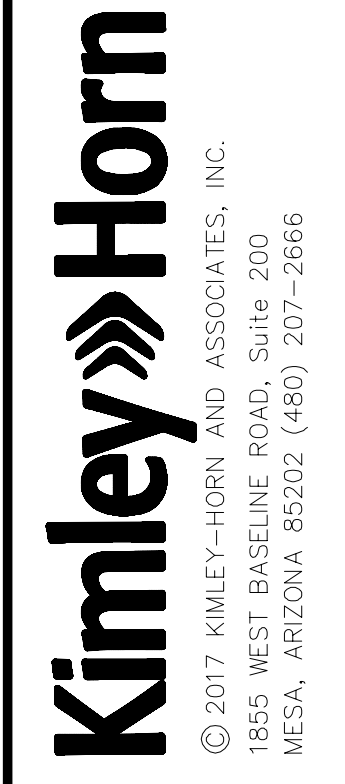
PROJECT NARRATIVE
 THE SCOPE OF THIS PROJECT CONSISTS OF A FOUR-SIDED REBUILD AT AN EXISTING McDONALDS RESTAURANT. NO ADDITIONS TO SQUARE FOOTAGE OR ALTERATIONS TO THE BUILDING FOOTPRINT ARE PROPOSED.

LEGAL DESCRIPTION
 LOT 3, MERIT PARK 1, ACCORDING TO BOOK 238 OF MAPS, PAGE 27, RECORDS OF MARICOPA COUNTY, ARIZONA;
 EXCEPTING THEREFROM THAT PORTION AS CONVEYED TO THE CITY OF MESA, A MUNICIPAL CORPORATION, IN SPECIAL WARRANTY DEED RECORDED JUNE 08, 1998 IN RECORDING NO. 98-481563.

- LEGEND**
- CONCRETE HARDSCAPE
 - McDONALDS' PROPERTY LINE
 - BUILDING SETBACK LINE
 - PARKING SPACE COUNT
 - FULL ACCESS DRIVEWAY
 - FIRE TURNING RADIUS



CALL YOU BEFORE YOU BUY
602-263-1100
1-800-STAKE-IT
 (OUTSIDE MARICOPA COUNTY)

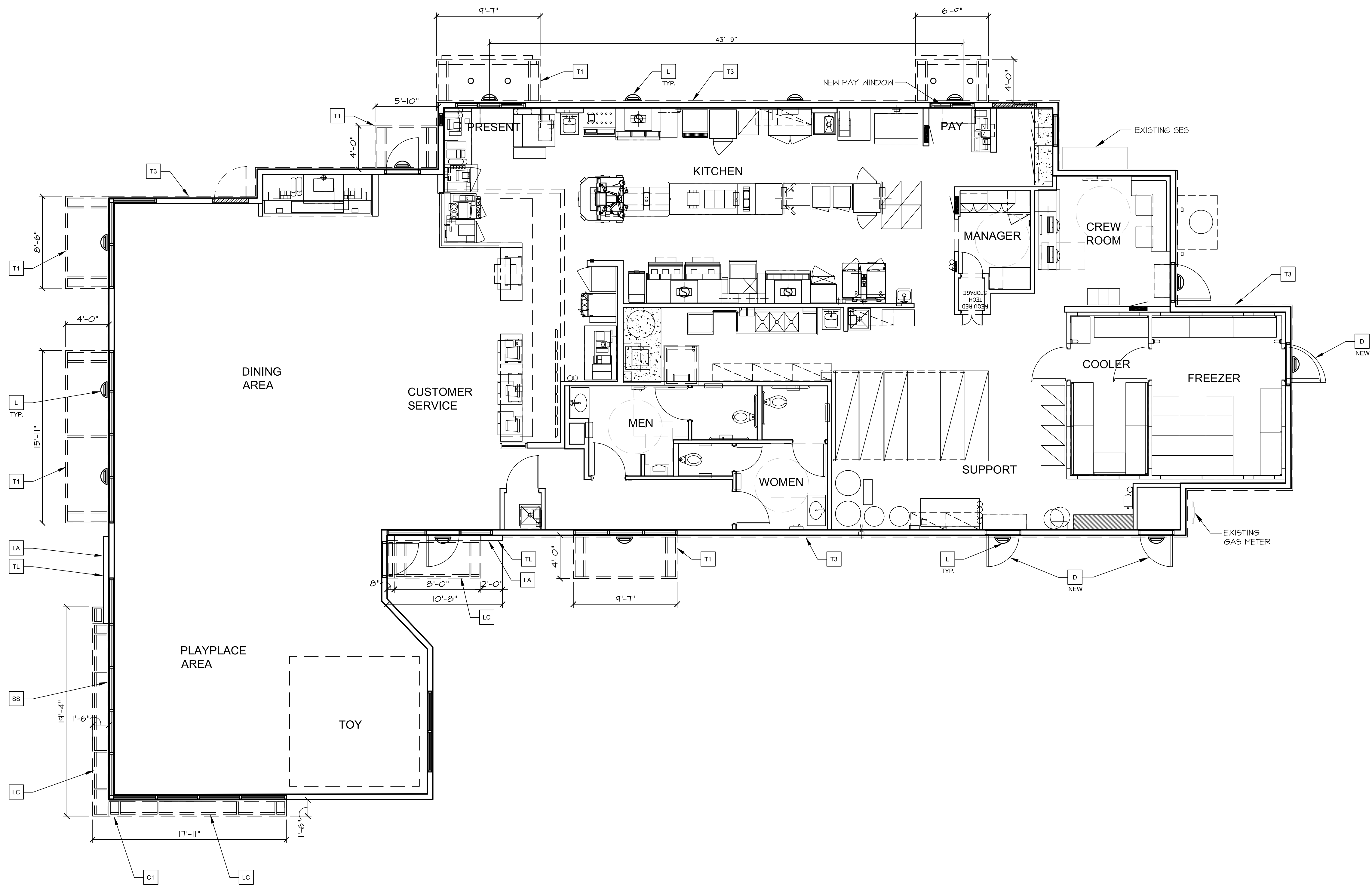


ALMA SCHOOL RD.
 AND
 GUADALUPE RD.

PRELIMINARY SITE PLAN

PROJECT No.	
SCALE (H):	1"=20'
SCALE (V):	NONE
DRAWN BY:	ADW
DESIGN BY:	STM
CHECK BY:	STM
DATE:	02/15/2016





KEY NOTES:		
BM BUILDING MATERIAL	D HOLLOW METAL DOOR - PAINT TO MATCH COLOR OF SURROUNDING MATERIAL	PB PIPE BOLLARD - PAINTED YELLOW
BB COLOR:	GR GUARDRAIL	PT PASS-THRU COIN COLLECTOR - OPTIONAL (RMHC)
AR = ARCADE	L LIGHT FIXTURE (WALL SCONGE - DOWN ONLY) - SEE ELECTRICAL	RO ROOF DRAIN OVERFLOW PIPE PAINT TO MATCH SURROUNDING MATERIAL
AC = ACCENT	LA LIGHT FIXTURE (ARCADE LIGHT - DOWN ONLY) - SEE ELECTRICAL (LINEAR FIXTURE COVER TO COVER FULL BRAND/ARCADE WALL)	S McDONALD'S SIGNAGE BY OTHERS - UNDER SEPARATE PERMIT. SEE SIGNAGE SUPPORT NOTE ON THIS SHEET.
BB = BASE BUILDING	LC LIGHT FIXTURE (CANOPY LIGHT - DOWN ONLY) - SEE ELECTRICAL	SF NEW STOREFRONT AND GLAZING
DT = DRIVE THRU BANDING	ML METAL LETTERING - BY OTHERS	SS METAL LOUVER SUNSCREEN PANEL
FB = PARAFET BAND	MS EXISTING BRICK WAINSCOT TO REMAIN	
C1 ALUMINUM CANOPY (COLOR: WHITE)		
C2 ALUMINUM CANOPY TIE-BACK		
C METAL COPING - COLOR TO MATCH SURROUNDING MATERIAL MATCH		
CJ CONTROL JOINT		

NOTE:
- EIFS CONTROL JOINTS INSTALLED PER MANUFACTURER'S RECOMMENDATIONS. LOCATIONS TO BE COORDINATED BY ARCHITECT OF RECORD.
- BOTTOM DT COLOR BAND SHOULD BE DARKER COLOR OF ANY EXTERIOR TWO-COLOR SCHEME.
- TOP DT BAND HEIGHT WILL VARY ACCORDING TO BOTTOM OF TRELLIS LOCATION.
- HIGHLY RECOMMEND BRAND DT HEARTH ELEMENT TO BE INSTALLED BASED ON SITE VISIBILITY.
- HIGHLY RECOMMEND REAR BRAND WALL ELEMENT TO BE INSTALLED BASED ON SITE VISIBILITY.
- CORRUGATED METAL: RECOMMEND ALUMINUM FOR PROJECTS WITH IN 2,000FT FROM SALTWATER ENVIRONMENTS.

COLOR LEGEND (ALL COLORS ARE PER BENJAMIN MOORE PAINTS, U.N.O.)	
NOTE:	
CORE 16 CRAFTSMAN TILE SCHEME	AR ARCADES & HEARTH - TILE (PREFERRED) EUROPEST, E-WOOD COLLECTION COLOR: R4 BLACK SIZE: 6"x36" WATERPROOFING SETTING MATERIAL AND GROUT: BY MAFEL GROUT COLOR: ULTRA COLOR PLUS - 4T CHARCOAL GROUT WIDTH: 1/8" TO 3/16" CORNER TRIM: SCHLITZER, RONNEDG ROLOOTSDA Dark Anthracite; MATERIAL: ALUM. HEIGHT/10MM
BB	BASE BUILDING -STUCCO FAIRVIEW TAUPE BM HC-85
DT	DRIVE THRU SURROUND - IRON MOUNTAIN BM 2134-30
AC	ACCENT - WATNESBORO TAUPE BM 1544
FB	PARAFET BAND - CORRUGATED METAL - 3/8" 15" PANEL 24 GAUGE, COLOR: CITY SCAPE



MCDONALD'S - FLOOR PLAN

2665 S Alma School Rd, Mesa, AZ 85210



16094 - 02/15/2017

300 W. Clarendon Avenue
Suite 320
Phoenix, AZ 85013
O: 602.234.1868
F: 602.234.1413

PREPARED FOR: McDonald's USA, LLC
These drawings are the confidential and proprietary property of McDonald's USA, LLC and shall not be copied or reproduced without written authorization. Use of these drawings for reference or example on another project requires the services of properly licensed architects and engineers. Reproduction of these documents for reuse on another project is not authorized.

HIRAF LINEAR LED FACADE FIXTURE



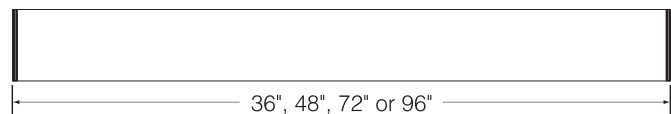
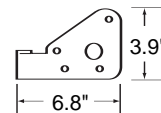
The HIRAF Linear Facade Lighting System is a holistic LED lighting solution designed from a clean slate to maximize the lighting effect for marketing your building as your brand while keeping energy usage and maintenance to an absolute minimum. Thanks to its intuitive plug and play mounting design with integral driver system, installation is quick and simple and only requires that power be brought to one fixture in each continuous row. The long life LED source minimizes maintenance to only an occasional cleaning of outer lens surfaces. This system is truly a "set it and forget it" solution only from Security Lighting!

Fixture Specifications

FEATURES

- Extruded aluminum construction, finished in weatherproof powder-coat paint
- Tempered glass lenses
- Power feed required only at beginning of each continuous row; subsequent fixtures plug together in series
- Fully integrated driver for completely self-contained lighting system
- Aluminum mounting brackets are finished in powder-coat paint and each order ships with a formed drilling template for ease of installation
- 70 CRI standard
- 5200K Color temperature standard. Consult factory for others.
- 50,000 hour long life LED illumination
- Fixtures available in up and down light, down light only or up light only

DIMENSIONS



ORDERING INFORMATION

SAMPLE CATALOG NUMBER

HIRAF | **LED** | **XX** | **XX** | **XXX** | **PS**
 Series | Source | Size | Distribution | Voltage | Finish

SERIES

HIRAF Linear Façade Fixture

SOURCE

LED LED

SIZE

96 8-Foot
72 6-Foot
48 4-Foot
36 3-Foot

DISTRIBUTION

UD Up and Down Light (14 watts per foot)
DO Down Light Only (8.5 watts per foot)
UO Up Light Only (5.75 watts per foot)

VOLTAGE

120 120-Volt
277 277-Volt

FINISH

Standard:
PS = Platinum Silver
 Custom Color: Consult Factory



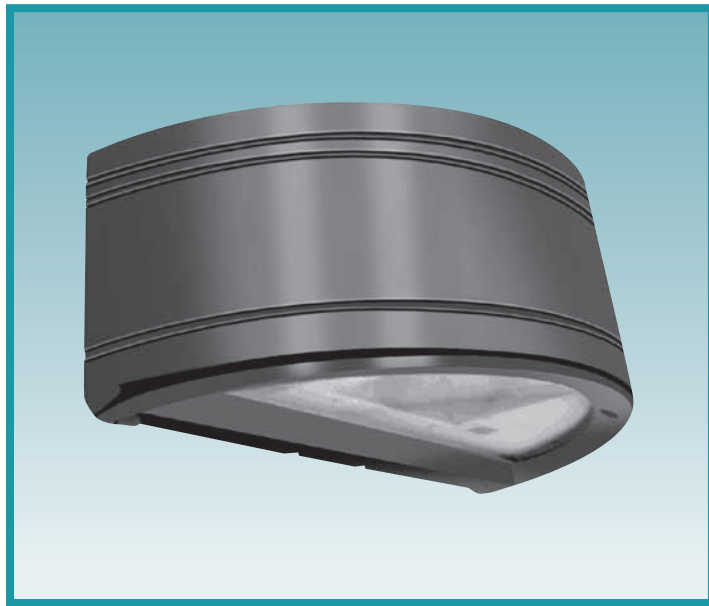
A HUBBELL LIGHTING, INC. COMPANY

Performance Designed Lighting Products

www.securitylighting.com

1085 Johnson Drive • Buffalo Grove, IL 60089 • TOLL-FREE: 800-544-4848 • PHONE: 847-279-0627 • FAX: 847-279-0642

RADIUS WALL SCONCE



The RWSC Series radius wall sconce offers maximum versatility with multiple light sources and finishes. The available combination of uplight/downlight washes the building facade while the radial soft form housing will complement similar architectural design elements.

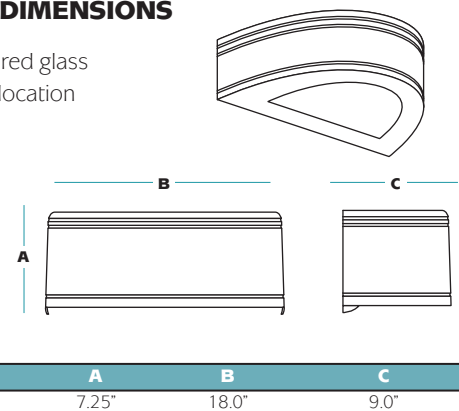


Fixture Specifications

FEATURES

- Durable cast aluminum housing
- Available in various lighting distributions for maximum versatility
- Integrated design eliminates high angle brightness
- Luminaire finished in weatherproof powder-coat paint
- Completely sealed, flat tempered glass lenses suitable for use in wet location
- Ships complete with lamp
- Downlight only, full cut-off
- Dark Sky compliant

DIMENSIONS



ORDERING INFORMATION

SAMPLE CATALOG NUMBER

RWSC | **XXXXXX** | **XX** | **XX** | **XXX**
 Series | Wattage/Source | Distribution | Finish | Voltage

SERIES	
RWSC	Radius Wall Sconce
WATTAGE/SOURCE ¹	
70PMH	70 watt pulse start metal halide
100PMH	100 watt pulse start metal halide
150PMH	150 watt pulse start metal halide
70HPS	70 watt high pressure sodium
100HPS	100 watt high pressure sodium
150HPS	150 watt high pressure sodium
26QF	26 watt quad tube fluorescent
32TRF	32 watt triple tube fluorescent
42TRF	42 watt triple tube fluorescent
226QF	2x26 watt quad tube fluorescent
232TRF	2x32 watt triple tube fluorescent
242TRF	2x42 watt triple tube fluorescent
30LED	30 watt LED ³ down only
50LED	50 watt LED up/down

DISTRIBUTION	
UD	Up/Downlight
WD	Downlight only (wide distribution)- standard
FT	Downlight only (forward throw)

FINISH ²	
DB	Dark Bronze
BK	Black
WH	White
PS	Platinum Silver

¹ Consult factory for other lamp wattage and sources.
² Other finishes available. Consult factory.
³ Available with WD distribution only.
⁴ Not for use with LED source.

VOLTAGE	
120	120 volt
277	277 volt
MT	Multi-Tap

OPTIONS	
QSL	Quartz re-strike with lamp
F	Single fusing
FF	Double fusing
EM12⁴	1 MR11/MR16 two pin socket for 12v power (by others) 35w max. 35w MR11 lamp included.
2EM12⁴	2 MR11/MR16 two pin sockets for 12v power (by others) 35w max. 35w MR11 lamp included.

ACCESSORIES	
EM	Remote emergency ballast (fluorescent only)



A HUBBELL LIGHTING, INC. COMPANY

Performance Designed Lighting Products

www.securitylighting.com

1085 Johnson Drive • Buffalo Grove, IL 60089 • TOLL-FREE: 800-544-4848 • PHONE: 847-279-0627 • FAX: 847-279-0642

VP-S

Viper (Small)

SITE/ROADWAY



FEATURES

- The Beacon Viper luminaire is available in two sizes with a wide choice of different LED wattage configurations and optical distributions designed to replace HID lighting up to 1000W MH or HPS and with 5 different mounting options for application in a wide variety of new and existing installations.
- Each Viper luminaire is supplied with an one piece optical cartridge system consisting of an LED engine, LED lamps, optics, gasket and stainless steel bezel.
- A thermal circuit, LIFESHIELD™, shall protect the luminaire from excessive temperature by interfacing with the 0-10V dimmable drivers to reduce drive current as necessary.
- Aluminum thermal clad board with 0.062" thick aluminum base layer, thermally conductive dielectric layer, 0.0014" thick copper circuit layer circuit layer designed with copper pours to minimize thermal impedance across dielectric.

ORDERING INFORMATION

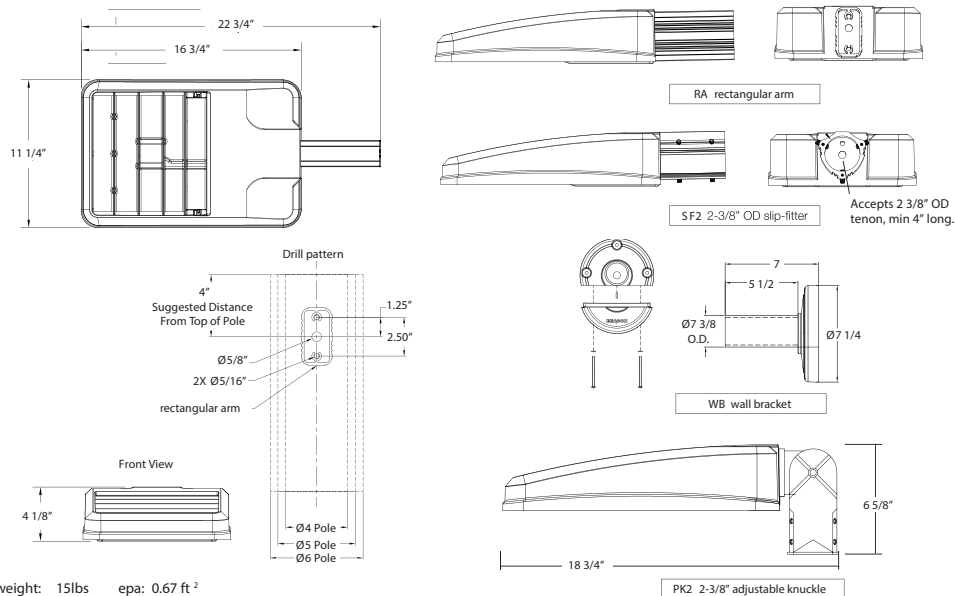
VP-S				
MODEL VP-S Viper (Small)	CCT-COLOR TEMP 5K 5000° K (std.) 4K 4000° K 3K 3000° K	VOLTAGE UNV 120-277V 347 347V 480 480V	MOUNTING OPTIONS RA Rectangular Arm SF2 2 3/8" OD Slipfitter PK2 2 3/8" Adjustable Knuckle WB Wall Bracket	COLOR BBT Basic Black Textured BMT Black Matte Textured WHT White Textured MBT Metallic Bronze Textured BZT Bronze Textured GYS Gray Smooth DPS Dark Platinum Smooth GNT Green Textured MST Metallic Silver Textured MTT Metallic Titanium Textured OWI Old World Iron _RAL
ENGINE-WATTS 22NB-50 50 Watts 22NB-70 70 Watts 30NB-70 70 Watts 30NB-90 90 Watts	OPTICS T2 Type II T3 Type III T4 Type IV T5R Rectangular T5QM Sq. Medium T5W Round Wide	ELECTRICAL OPTIONS PCR-TL Photocell, Twist-lock PCR-SC Photocell, Shorting Cap NP No Photocontrol 2PF Dual Power Feed ^{1,2} STANDARD ELECTRICAL OPTIONS Lifeshield™ Thermal Protection 20K-Surge Protection ³ Dimming Drivers		

¹ Not available 30NB-90

² Not available @ 347/480V input

³ Not available @ 347V input

DETAILS



VIPER S SERIES

SMALL VIPER LUMINAIRE

Cat.#

Job

Type



Approvals

SPECIFICATIONS

Intended Use:

The Beacon Viper luminaire is available with a wide choice of different LED Wattage configurations and optical distributions designed to replace HID lighting up to 400W MH or HPS.

Construction:

- Manufactured with a low copper content, die cast aluminum.
- Coated with a polyester finish that meets ASTM B117 corrosion test requirements and ASTM D522 cracking and loss of adhesion test requirements.
- External hardware is corrosion resistant.
- One piece optical cartridge system consisting of an LED engine, LED lamps, optics, gasket and stainless steel bezel.
- Cartridge is held together with internal brass standoffs soldered to the board so that it can be field replaced as a one piece optical system.
- Two-piece silicone and micro-cellular polyurethane foam gasket ensures a weather-proof seal around each individual LED.

LED/Optics:

- 100V through 277V, 50 Hz to 60 Hz (UNV), or 347V or 480V input.
- Power factor is .92 at full load.
- All electrical components are rated at 50,000 hours at full load and 25°C ambient conditions per MIL- 217F Notice 2.
- Dimming drivers are standard with connections for external dimming equipment available upon request.
- Component-to-component wiring within the luminaire may carry no more than 80% of rated load and is listed by UL for use at 600VAC at 50°C or higher.
- Plug disconnects are listed by UL for use at 600 VAC, 13A or higher. 13A rating applies to primary (AC) side only.

Electrical:

- Fixture electrical compartment shall contain all LED driver components and shall be provided with a push-button terminal block for AC power connections.
- The housing is designed for an optional twist lock photo control receptacle.
- Ambient operating temperature -40°C to 40°C
- Surge protection - 20KA; shuts off at end of life.
- Optional 7-pin ANSI C136.41-2013 twist-lock photo control receptacle available. Compatible with ANSI C136.41 external wireless control devices.
- Lifeshield™ Circuit - protects luminaire from excessive temperature. The device shall activate at a specific, factory-preset temperature, and progressively reduce power over a finite temperature range. A luminaire equipped with the device may be reliably operated in any ambient temperature up to 55°C (131°F). Operation shall be smooth and undetectable to the eye. Thermal circuit is designed to "fail on", allowing the luminaire

to revert to full power in the event of an interruption of its power supply, or faulty wiring connection to the drivers. The device shall be able to co-exist with other 0-10V control devices (occupancy sensors, external dimmers, etc.).

Controls/Options:

- Available with an optional passive infrared (PIR) motion sensor capable of detecting motion 360° around the luminaire. When no motion is detected for the specified time, the Motion Response system reduces the Wattage to factory preset level, reducing the light level accordingly. When motion is detected by the PIR sensor, the luminaire returns to full Wattage and full light output. Please contact Beacon Products if project requirements vary from standard configuration.
- Available with Energeni for optional set dimming, timed dimming with simple delay, or timed dimming based on hours of operation or time of night (see www.beaconproducts.com/products/energeni).
- Also available with **Beaconnect** Wireless Control System (see [Beaconnect](http://www.beaconproducts.com/products/beaconnect) product page for more details www.beaconproducts.com/products/beaconnect).

Installation:

- Mounting options for horizontal arm, vertical tenon or traditional arm mounting available. Mounting hardware included.

Finish:

- Beacote V polyester powder-coat electrostatically applied and thermocured.
- Beacote V finish consists of a five stage pretreatment regimen with a polymer primer sealer and top coated with a thermoset super TGIC polyester powder coat finish.
- The finish meets the AAMA 605.2 performance specification which includes passing a 3000 hour salt spray test for corrosion resistance and resists cracking or loss of adhesion per ASTM D522 and resists surface impacts of up to 160 inch-pounds.

Listings:

- DesignLights Consortium (DLC) qualified, consult DLC website for more details: <http://www.designlights.org/QPL>
- Listed to UL1598 and CSA22.2#250.0-24 for wet locations and 40°C ambient temperatures
- 3G rated for ANSI C136.31 high vibration applications
- IDA approved

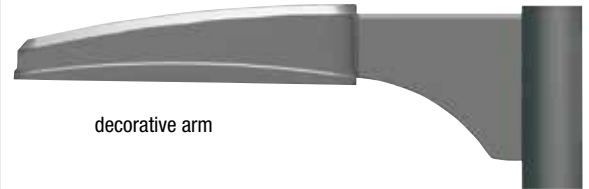
Warranty:

Five year limited warranty (for more information visit: www.hubbellighting.com/resources/warranty).

PRODUCT IMAGE(S)

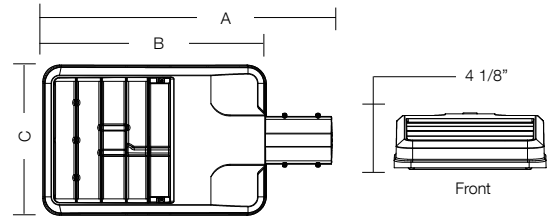


rectangular arm



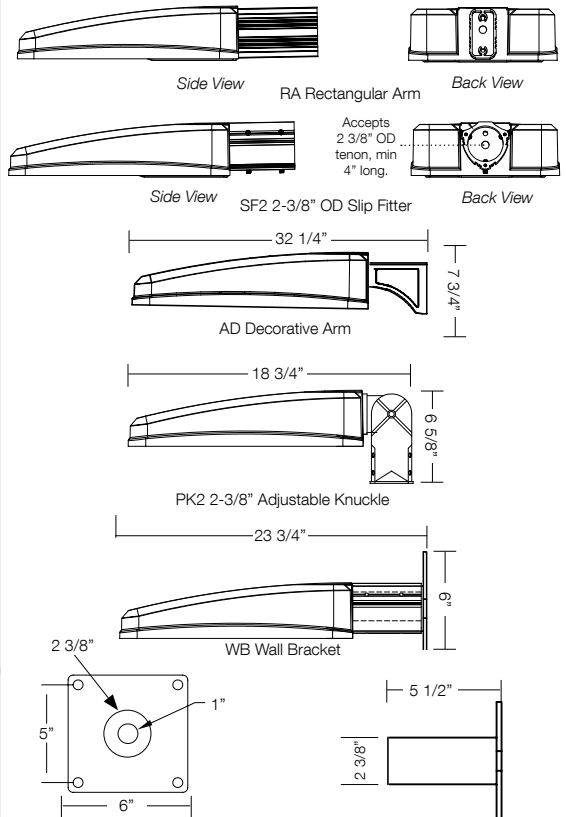
decorative arm

DIMENSIONS



A	B	C	Weight:	EPA
22.75" (578 mm)	16.75" (425 mm)	11.25" (286 mm)	15.0 lbs (6.8 kg)	.67 ft ²

MOUNTING OPTIONS



CERTIFICATIONS/LISTINGS



*3000K and warmer CCTs only



Beacon Products • 2041 58th Avenue Circle East Bradenton, FL 34203 • Phone: 800-345-4928

Due to our continued efforts to improve our products, product specifications are subject to change without notice.

© 2015 BEACON PRODUCTS, All Rights Reserved • For more information visit our website: www.beaconproducts.com • Printed in USA VPS-SPEC 7/16



ORDERING INFORMATION ORDERING EXAMPLE: VPS/36NB-80/5K/T4/UNV/PCR-TL/BCW/BLC/RA/BBT

SERIES	ENGINE-WATTS	LED COLOR	VOLTAGE	ELECTRICAL OPTIONS	HOUSE SIDE SHIELD OPTIONS	FINISH
VPS viper-small	24NB-55 55W, LED array 30NB-70 70W, LED array 36NB-80 80W, LED array 48NB-110 110W, LED array 60NB-136 136W, LED array	3K 3000K 4K 4000K 5K 5000K OPTICS⁴ T1 type I T2 type II T3 type III T4 type IV T5R type V, rectangular T5QM type V, square medium T5W type V, round wide FR front row auto optic	UNV 120-277V 347V 347V 480V 480V	PCR-TL Twist lock receptacle with photo control PCR-SC Twist lock receptacle with shorting cap PCR-U Twist lock receptacle dual power feed 2PF ⁷	HSS-90 house side shield 90° HSS-180 house side shield 180° BLC ³ backlight control SENSOR OPTIONS BMD ^{1,2,5} motion sensor for beaconnect MDD ^{2,5} motion dimming detector MOUNTING OPTIONS RA rectangular arm for round or square pole mount. RPA included. SF2 2 3/8" OD slip-fitter PK2 2 3/8" adjustable knuckle AD decorative arm with universal mounting slot. RPA ordered separately. See referenced table. WB wall bracket (use with SF2 or PK2), SF2 standard	BBT basic black textured BMT black matte textured WHT white textured MBT metallic bronze textured BZT bronze textured DBT dark bronze textured GYS gray smooth DPS dark platinum smooth GNT green textured MST metallic silver textured MTT metallic titanium textured OWI old world iron RAL _____

MDD ORDERING INFORMATION: When ordering a fixture with the motion detection option (MDD), please specify the appropriate information. These settings are specified in the ordering as shown in the example below.

VPS / 36NB-135 / 5K / T5W / UNV / MDD - 1 to 30 min. - 33% or 50% - ?? / MT

High to Dim Delay Low Level Mounting Height (ft.)

BEACONNECT ORDERING INFORMATION: When ordering a fixture with the Beaconnect lighting control options please specify the appropriate group and sensor information. Please provide dimming schedule information in either the Beaconnect excel spreadsheet or Beaconnect software. For more detailed information please visit www.beaconproducts.com/beaconnect or contact beacon tech support at (800) 345-4928. These settings are specified in the ordering as shown in the example below. (Family) / 24NB-55 / 5K / T3 / UNV / BCW-(Group 1-16)_____(Optional Zone 1-250)_____/BMD - ____Time Delay(1 to 255)____ - ____Dimming% (1 to 100)____ - ____mounting height(1-20ft)____/ Example: TRV/24NB-55/5K/T3/UNV/BCW-G1 /BMD-30M-50%-10F/DBT for luminaires without sensors in the group omit the BMD ordering logic Example: TRV/24NB-55/5K/T3/UNV/BCW-G1 /DBT

¹ Must specify group and zone information at time of order. See www.beaconproducts.com/controls/beaconnect for further details.
² Specify time delay, dimming level and mounting height.
³ T4 optic only.
⁴ To rotate optics Left or right 90 degrees, specify L or R after the optical distribution example T4L.
⁵ Not available with other control or sensor options.
⁶ When ordering Energeni, specify the routine setting code (example GENI-04). See Energeni brochure and instructions for setting table and options. Not available with sensor options.
⁷ Not available for 347V or 480V input.
⁸ Not available with 30NB-70.

Catalog Number	Description
VPS-AD-RPA3	3.5" - 4.125"
VPS-AD-RPA4	4.188" - 5.25"
VPS-AD-RPA5	5.5" - 6.5"

Order Separately

Catalog Number	Description
ASM-USB-BCW	Beaconnect Software loaded on USB flash drive* (Windows based only)
ASM-TABLET-BCW	Beaconnect 7" Windows Tablet*

*Includes USB Radio



DesignLights Consortium qualified. Consult DLC website for more details: <http://www.designlights.org/QPL>



PERFORMANCE DATA

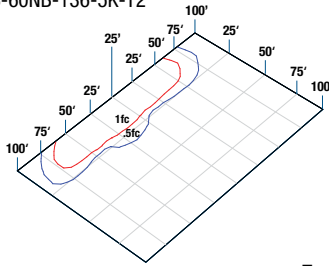
# LED'S	DRIVE CURRENT (MILLIAMPS)	SYSTEM WATTS	DISTRIBUTION TYPE	5K (5000K nominal, 70 CRI)					4K (4000K nominal, 70 CRI)					3K (3000K nominal, 70 CRI)				
				LUMENS	LPW ¹	B	U	G	LUMENS	LPW ¹	B	U	G	LUMENS	LPW ¹	B	U	G
24	700 mA	55 W	FR/T1	6339	114	1	0	1	6276	112	1	0	1	5389	97	1	0	1
			T2	5666	102	2	0	2	5610	101	2	0	2	4816	86	1	0	2
			T3	5610	101	1	0	2	5554	100	1	0	2	4784	86	1	0	2
			T4	6171	111	1	0	2	6110	109	1	0	2	5245	94	1	0	2
			T5R	6283	113	3	0	3	6221	111	3	0	3	5341	96	3	0	3
			T5QM	6171	111	3	0	1	6110	109	3	0	1	5245	94	2	0	1
			T5W	6087	109	3	0	1	6027	108	3	0	1	5201	93	3	0	1
30	700 mA	70 W	FR/T1	8096	113	1	0	1	8016	112	1	0	1	6882	96	1	0	1
			T2	7204	101	2	0	2	7133	100	2	0	2	6123	86	2	0	2
			T3	7743	108	2	0	2	7666	107	2	0	2	6659	93	2	0	2
			T4	7896	111	1	0	2	7817	110	1	0	2	6791	95	1	0	2
			T5R	8035	112	3	0	3	7954	111	3	0	3	6829	95	3	0	3
			T5QM	7846	110	3	0	1	7768	109	3	0	1	6669	93	3	0	1
			T5W	8305	116	3	0	2	8222	115	3	0	2	7142	100	3	0	2
36	700 mA	80 W	FR/T1	9515	114	1	0	1	9414	112	1	0	1	8083	96	1	0	1
			T2	8505	101	2	0	3	8415	100	2	0	3	7224	87	2	0	2
			T3	8415	100	2	0	2	8331	99	2	0	2	7175	86	2	0	2
			T4	9256	110	1	0	3	9164	109	1	0	3	7868	94	1	0	3
			T5R	9425	112	3	0	3	9331	111	3	0	3	8011	96	3	0	3
			T5QM	9257	110	3	0	1	9164	109	3	0	1	7868	94	3	0	1
			T5W	9131	109	3	0	2	9040	108	3	0	2	7801	93	3	0	2
48	700 mA	110 W	FR/T1	12679	114	2	0	1	15522	113	2	0	1	10777	97	1	0	1
			T2	11332	102	3	0	3	11220	101	3	0	3	9633	87	2	0	3
			T3	11220	101	2	0	3	11108	100	2	0	3	9567	86	2	0	3
			T4	12342	111	2	0	3	12219	110	2	0	3	10491	95	2	0	3
			T5R	12567	113	4	0	4	12441	112	4	0	4	10682	96	3	0	3
			T5QM	12342	111	3	0	2	12219	111	3	0	2	10491	95	3	0	2
			T5W	12175	110	4	0	2	12053	109	4	0	2	10402	94	4	0	2
60	700 mA	136 W	FR/T1	15848	116	2	0	1	15690	115	2	0	1	13471	98	2	0	1
			T2	14165	103	3	0	3	14025	102	3	0	3	12041	88	3	0	3
			T3	14025	102	3	0	3	13885	101	3	0	3	11959	87	3	0	3
			T4	15427	113	2	0	3	15274	111	2	0	3	13114	96	2	0	3
			T5R	15708	115	4	0	4	15259	111	4	0	4	13352	97	4	0	4
			T5QM	15427	113	4	0	2	15274	111	4	0	2	13314	96	3	0	2
			T5W	15218	111	4	0	2	15066	111	4	0	2	13002	95	4	0	2

¹Lumen values are from photometric tests performed in accordance with IESNA LM-79-08. Data is considered to be representative of the configurations shown. Actual performance may differ as a result of end-user environment and application.

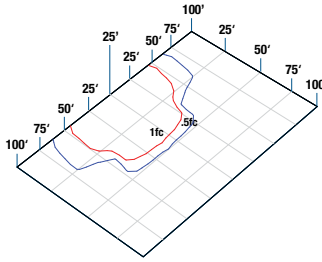


PHOTOMETRICS

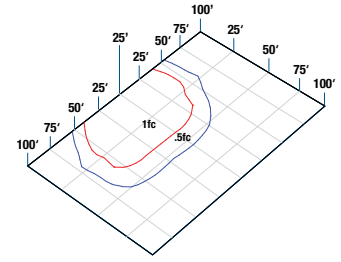
Type II
VP-S-60NB-136-5K-T2



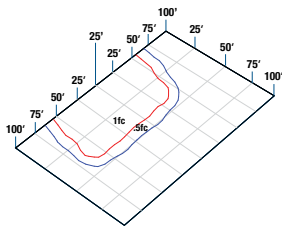
Type III
VP-S-60NB-136-5K-T3



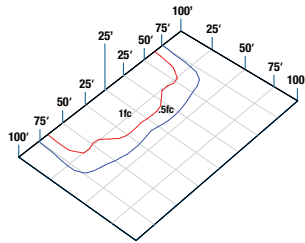
Type IV
VP-S-60NB-136-5K-T4



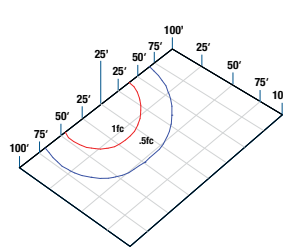
Type V Square Medium
VP-S-60NB-136-5K-T5QM



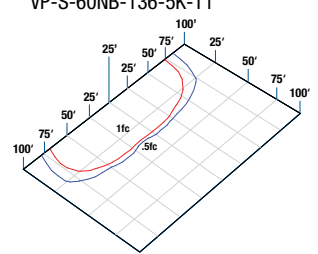
Type V Rectangular
VP-S-60NB-136-5K-T5R



Type V Round Wide
VP-S-60NB-136-5K-T5W



Front Row Auto Optic / Type I
VP-S-60NB-136-5K-FR
VP-S-60NB-136-5K-T1



ELECTRICAL DATA

# OF LEDS	NUMBER OF DRIVERS	DRIVE CURRENT (mA)	INPUT VOLTAGE (V)	SYSTEM POWER (w)	CURRENT (Amps)
24	2	700 mA	120	55	0.5
			277		0.2
			347		0.2
			480		0.1
			120		0.6
30	2	700 mA	120	70	0.3
			277		0.2
			347		0.1
			480		0.1
			120		0.7
36	1	700 mA	120	80	0.3
			277		0.2
			347		0.2
			480		0.2
			120		0.9
48	1	700 mA	120	110	0.4
			277		0.3
			347		0.2
			480		0.2
			120		1.1
60	1	700 mA	120	136	0.5
			277		0.4
			347		0.4
			480		0.3
			120		0.3

PROJECTED LUMEN MAINTENANCE

AMBIENT TEMP.	0	25,000	50,000	TM-21-11 60,000	100,000	Calculated L70 (HOURS)
25°C / 77°C	1.00	0.97	0.95	0.95	0.92	>470,000

¹ Projected per IESNA TM-21-11

Data references the extrapolated performance projections for the base model in a 40°C ambient, based on 10,000 hours of LED testing per IESNA LM-80-08.

AMBIENT TEMPERATURE		LUMEN MULTIPLIER
0°C	32°F	1.02
10°C	50°F	1.01
20°C	68°F	1.00
25°C	77°F	1.00
30°C	86°F	0.98
40°C	104°F	0.98

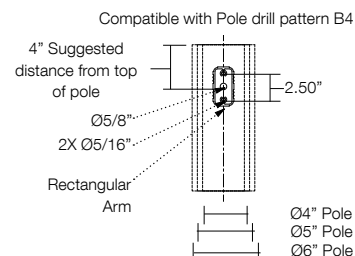
Use these factors to determine relative lumen output for average ambient temperatures from 0-40°C (32-104°F).

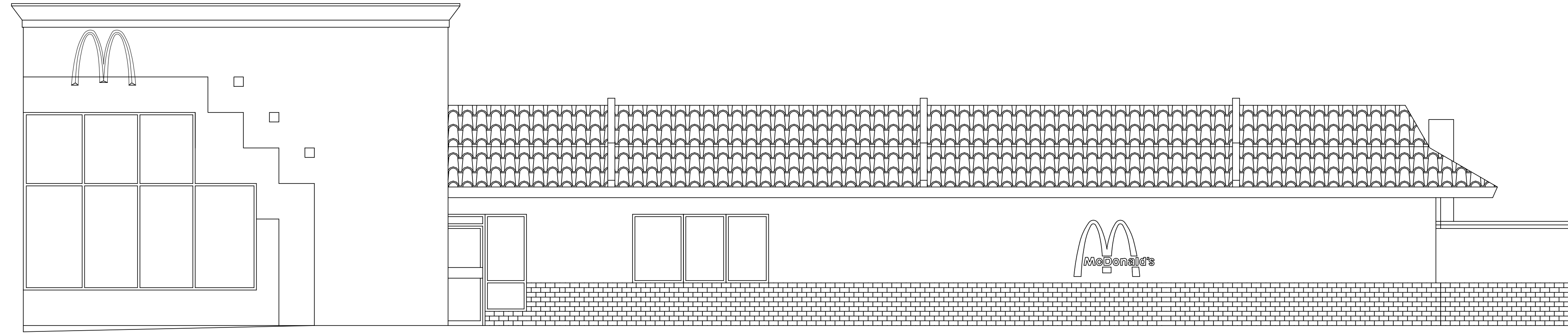
EPA

Config.	EPA
1	.67
2 @ 90°	.95
2 @ 180°	1.34

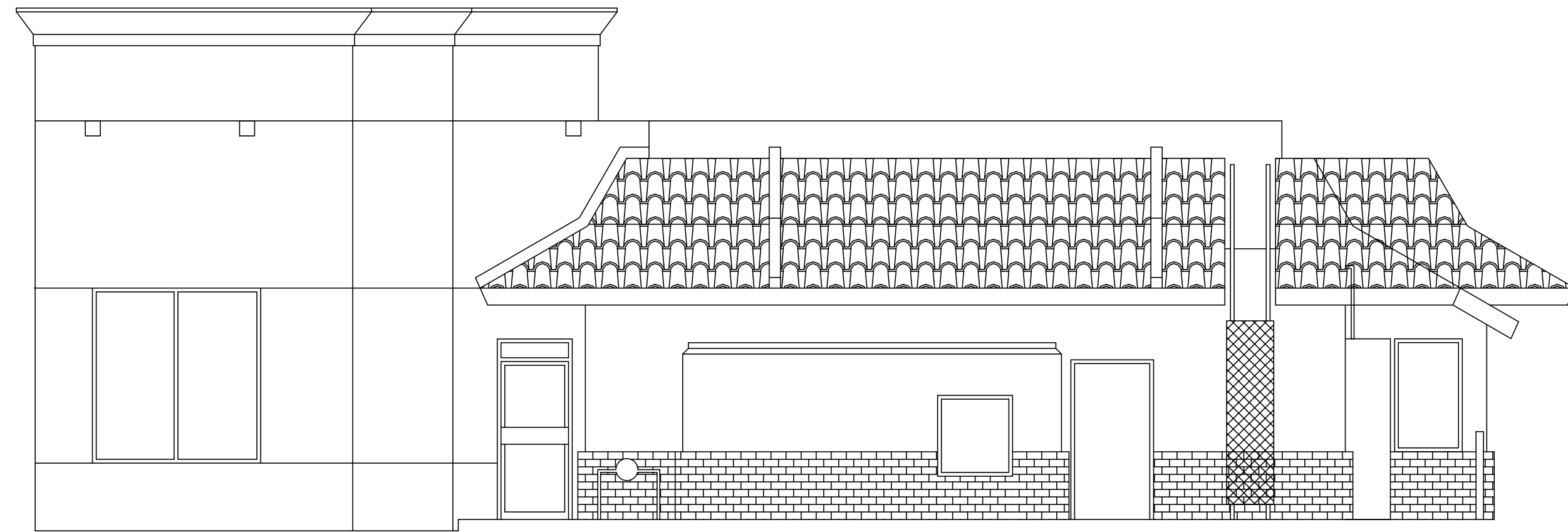
Config.	EPA
3 @ 120°	1.36
3 @ 90°	1.5
4 @ 90°	1.5

DRILL PATTERN

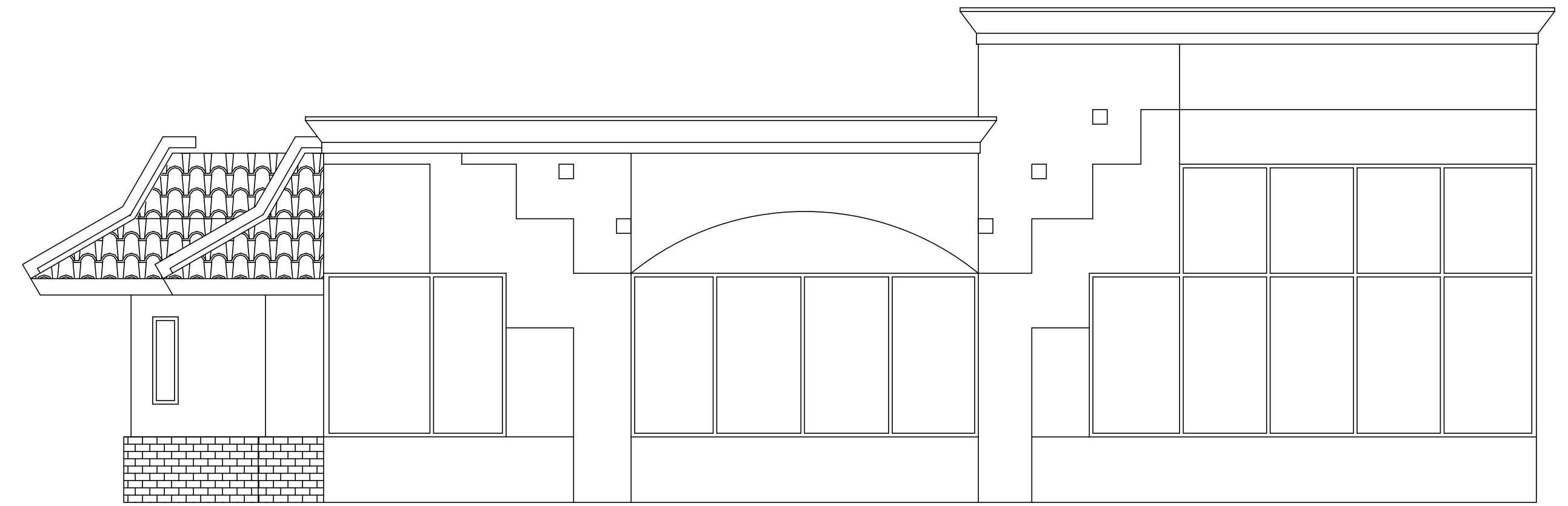




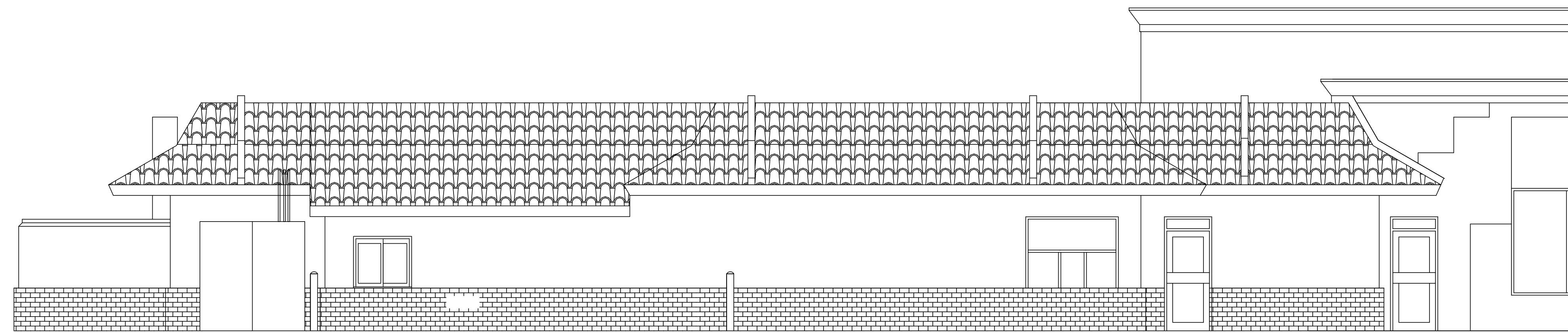
NON DRIVE THRU ELEVATION - SOUTH



REAR ELEVATION - EAST



FRONT ELEVATION - WEST



DRIVE THRU ELEVATION - NORTH

MCDONALD'S - EXISTING ELEVATIONS - REFERENCE

2665 S Alma School Rd, Mesa, AZ 85210



16094 - 02/15/2017

300 W. Clarendon Avenue
Suite 320
Phoenix, AZ 85013
O: 602.234.1868
F: 602.234.1413

PREPARED FOR: McDonald's USA, LLC
These drawings are the confidential and proprietary property of McDonald's USA, LLC and shall not be copied or reproduced without written authorization. Use of these drawings for reference or expertise on another project requires the services of properly licensed architects and engineers. Reproduction of these documents for reuse on another project is not authorized.